



South Santa Clara County Fire District Fire Hazard Severity Zones (FHSZ)



Coe
State
Wilderness

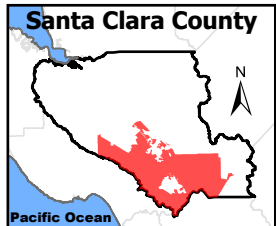
South Santa Clara
County Fire District

Fire Hazard Severity Zones (FHSZ) in Local Responsibility Area (LRA), as Identified by the State Fire Marshal

- Very High LRA
- High LRA
- Moderate LRA
- Non-Wildland (Unzoned LRA)

Fire Hazard Severity Zones in State Responsibility Area (SRA), Effective April 1, 2024

- Very High SRA
- High SRA
- Moderate SRA



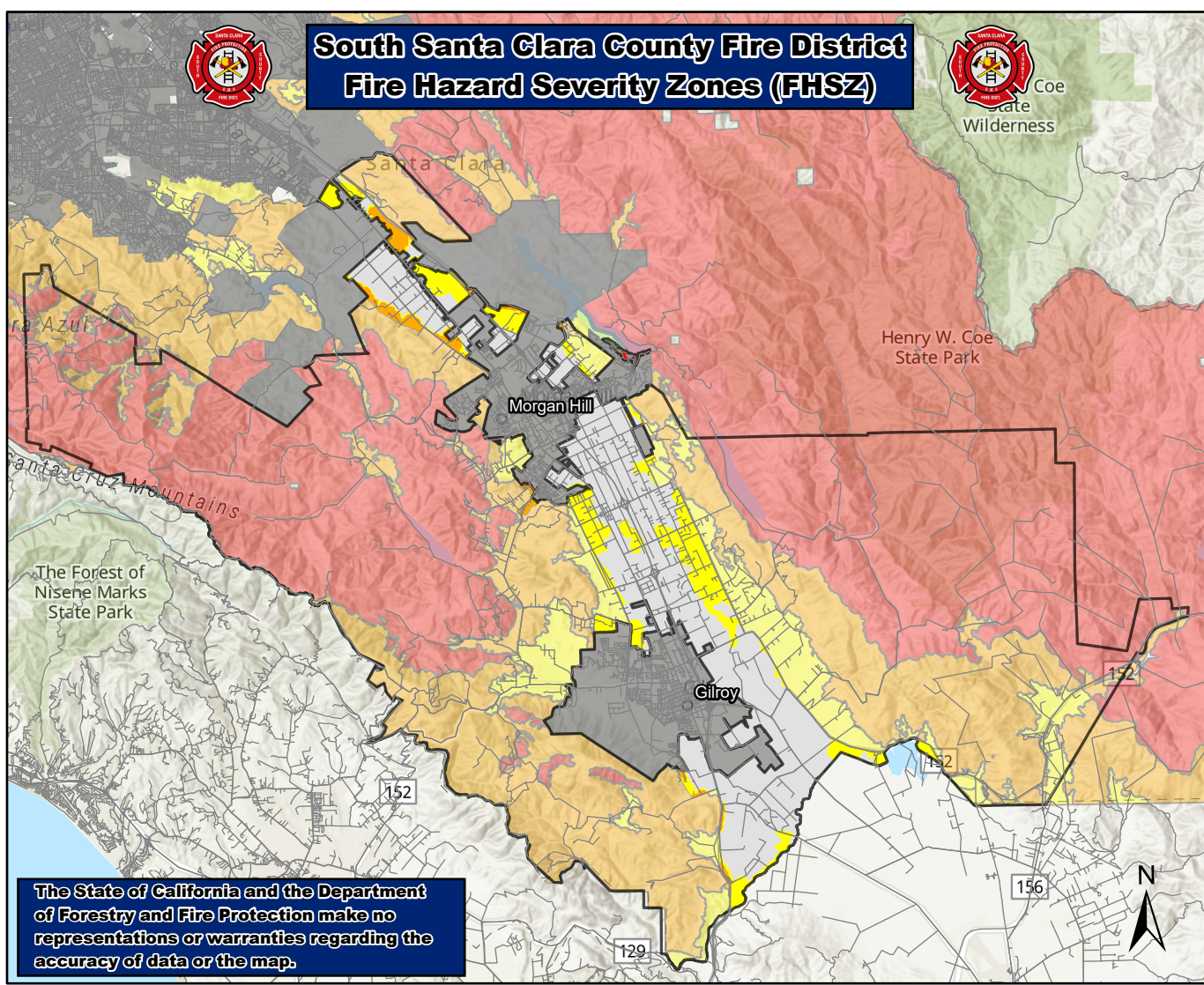
0 3 6 Miles

0 3.5 7 Kilometers

1:310,000

NAD 1983 UTM Zone 10N

Created: 02/28/2025 at 10:00



The State of California and the Department of Forestry and Fire Protection make no representations or warranties regarding the accuracy of data or the map.